

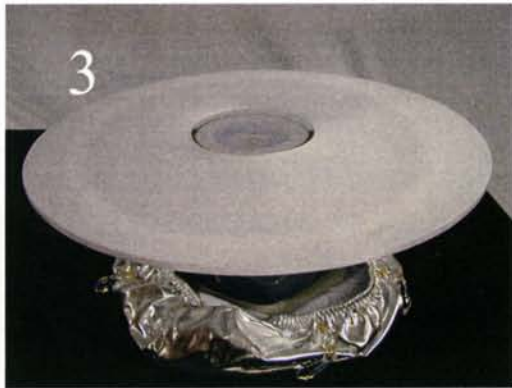


Step 1: Place light unit onto the center of spandex light cover. Place this into the interior side of the lampshade cover.



Step 2: Place plastic dowl onto the face of the light unit. Just slide onto the flange.

Step 3: Place large disc onto the plastic dowl as pictured.



Step 4: Carefully pull lamp shade cover over the lip of the plastic disc.



Step 5: Flip lamp over and place on top of your glass container. Light switch is under spandex. Just push into top of lamp and twist gently the light switch.

## Lamp Assembly Directions

